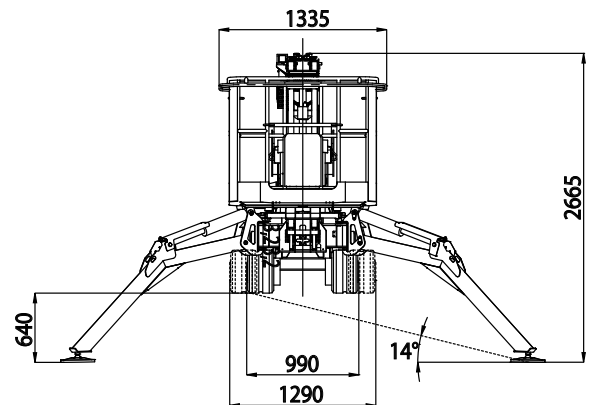
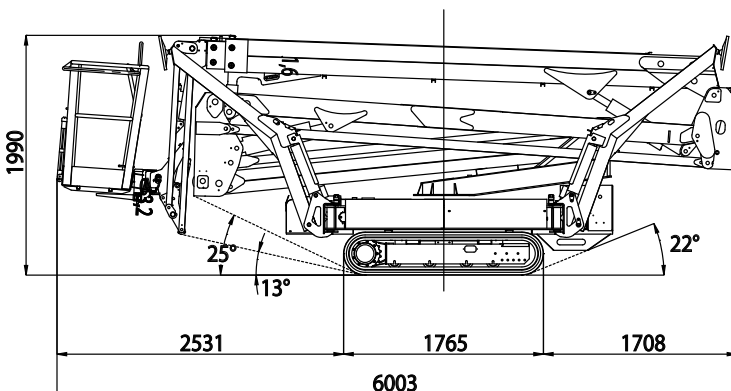
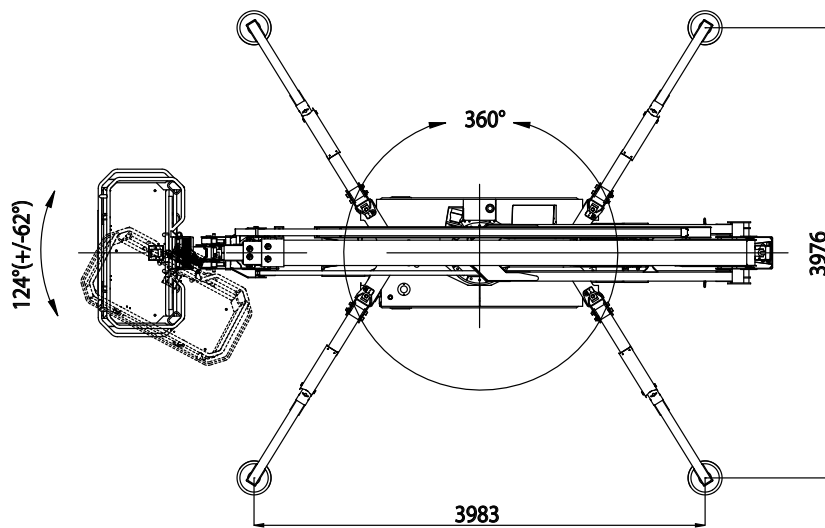
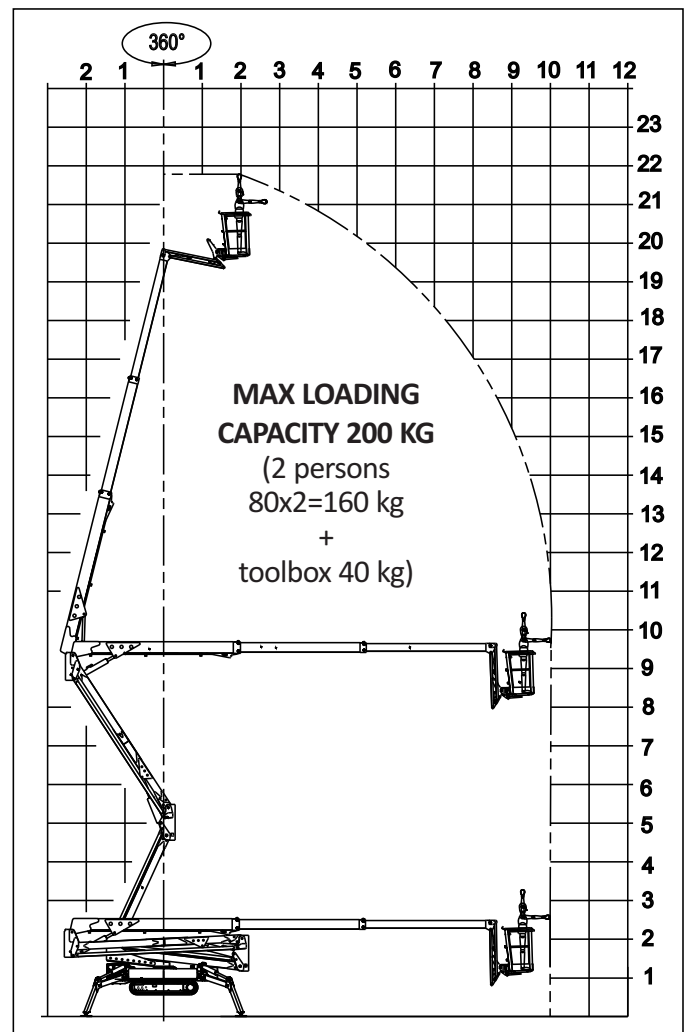
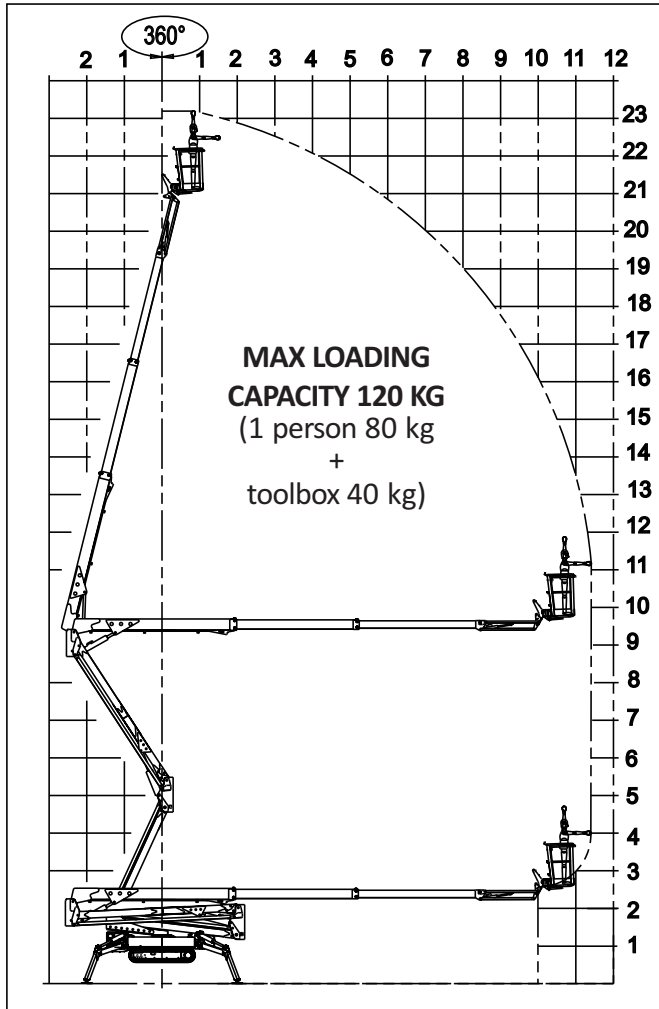


LIGHTLIFT 23.12 *MS*



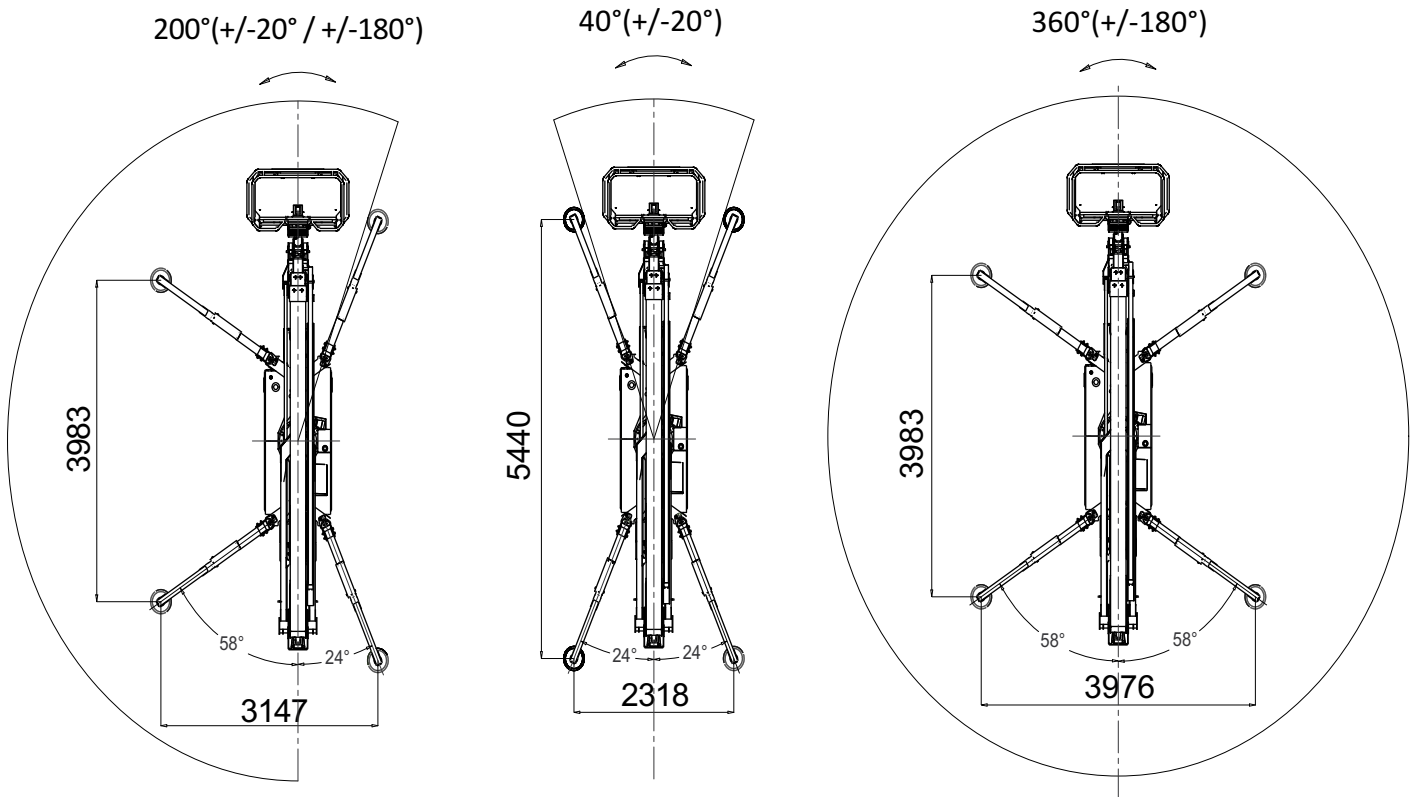
LIGHTLIFT 23.12 III S



LIGHTLIFT 23.12 III S

STANDARD VARIABLE AREA

Outriggers can deploy in different positions.
This solution enables to set up the machine even in the narrowest places.





TRACKED AERIAL PLATFORMS

LIGHTLIFT 23.12 III S

PETROL ENGINE

Brand	HONDA
Type	iGX440
Pistons no. and displacement	single-cylinder 440 cc
Max. gross power	12,7 HP -9,5 KW @ 3600 rpm
Setting	3600 rpm
Electrical start.....	12 volt

DIESEL ENGINE

Brand	Perkins
Type	402.05
Pistons no. and displacement	double-cylinder 510 cc
Max. gross power	14 HP - 10,2 Kw @ 3600 rpm
Setting	3500 rpm
Electrical start.....	12 volt

ELECTRIC MOTOR

Standard	230V / 50Hz - 2,2 Kw 1500 rpm
Optional	110V / 50Hz - 2,2 Kw 1500 rpm

AERIAL PART VALVE BLOCK

Type	electro-proportional
------------	----------------------

HYDRAULIC PUMPS

Type and no	no. 2 gear pumps x 4,27 cc
Translation system/outriggers pressure	160 bar
Aerial system pressure	200 bar

TRACKED UNDERCARRIAGE

Track tensioner	grease-filled
Rollers no. per side	4 + slide
Widening system.....	990 / 1290 mm
Translation speed (auto2speed)	1,0 / 1,7 km/h

OPERATING WEIGHT (PETROL / DIESEL ENGINE)	2990 / 3090 kg
PETROL FUEL TANK.....	5,9 litres
DIESEL FUEL TANK	11 litres
MAX UPPER SLANT	12,5 m/s
MAX WIND SPEED	15°
MAX WIND SPEED.....	12,5 m/s

TRACKED AERIAL PLATFORMS



LIGHTLIFT 23.12 MS LITHIUM

ELECTRIC MOTOR

Electric motor	3,5kW / 70V
Electric system voltage.....	70V-12V
Lithium battery pack	70V 90Ah / 100Ah
Estimated battery range on full charge.....	4-5 h
Onboard battery charger	220V±20V 50÷60Hz
Optional battery charger	110V±10V 50÷60Hz
Estimated recharge time on flat batteries.....	4-5 h
Estimated recharge time to 80% on flat batteries	2 h
No. of possible recharges	2000 cycles

HYDRAULIC PUMPS

Type and no.	no.2 gear pumps x 4,27 cc
Translation system/outriggers pressure	160 bar
Aerial system pressure	200 bar

TRACKED UNDERCARRIAGE

Track tensioner	grease-filled
Rollers no. per side	4 + slide
Widening system.....	990 / 1290 mm
Translation speed	0,7 / 1,2 km/h

OPERATING WEIGHT 3200 kg

MAX UPPER SLANT15°

MAX WIND SPEED.....12,5 m/s